

# Turning Off the Autocomplete Feature of Microsoft Internet Explorer

1. Start the Microsoft Internet Explorer Program.
2. Access the Internet Options Menu through the Tools Menu below the title bar. See Diagram 1
3. Click on the Content Tab on the Internet Options Window. See Diagram 2
4. Click on the Autocomplete Button on the Content Tab of the Internet Options Window. See Diagram 2
5. Be sure the “Forms” and “User Names and Password on Forms” checkboxes are unchecked on the “Autocomplete Settings” window. See Diagram 3.
6. Click on the “Clear Forms” Buttons. See Diagram 3. Then click on the “OK” button in the “Clear all previously saved form entries except passwords” window. See Diagram 4. This will clear any entries on any web forms that have been saved to your system.
7. Click on the “Clear Password” Buttons. See Diagram 3. Then click on the “OK” button in the “Clear all previously saved form passwords” Window. See Diagram 5. This will clear any passwords that have been saved to your system.
8. Click on the “OK” Button in the Window. See Diagram 3.
9. Click on the “OK” Button for the Autocomplete Window. See Diagram 3.
10. Click on the “OK” Button on the “Internet Options” Window to make the Autocomplete setting effective. See Diagram 2

You have completed this task.

Diagram 1

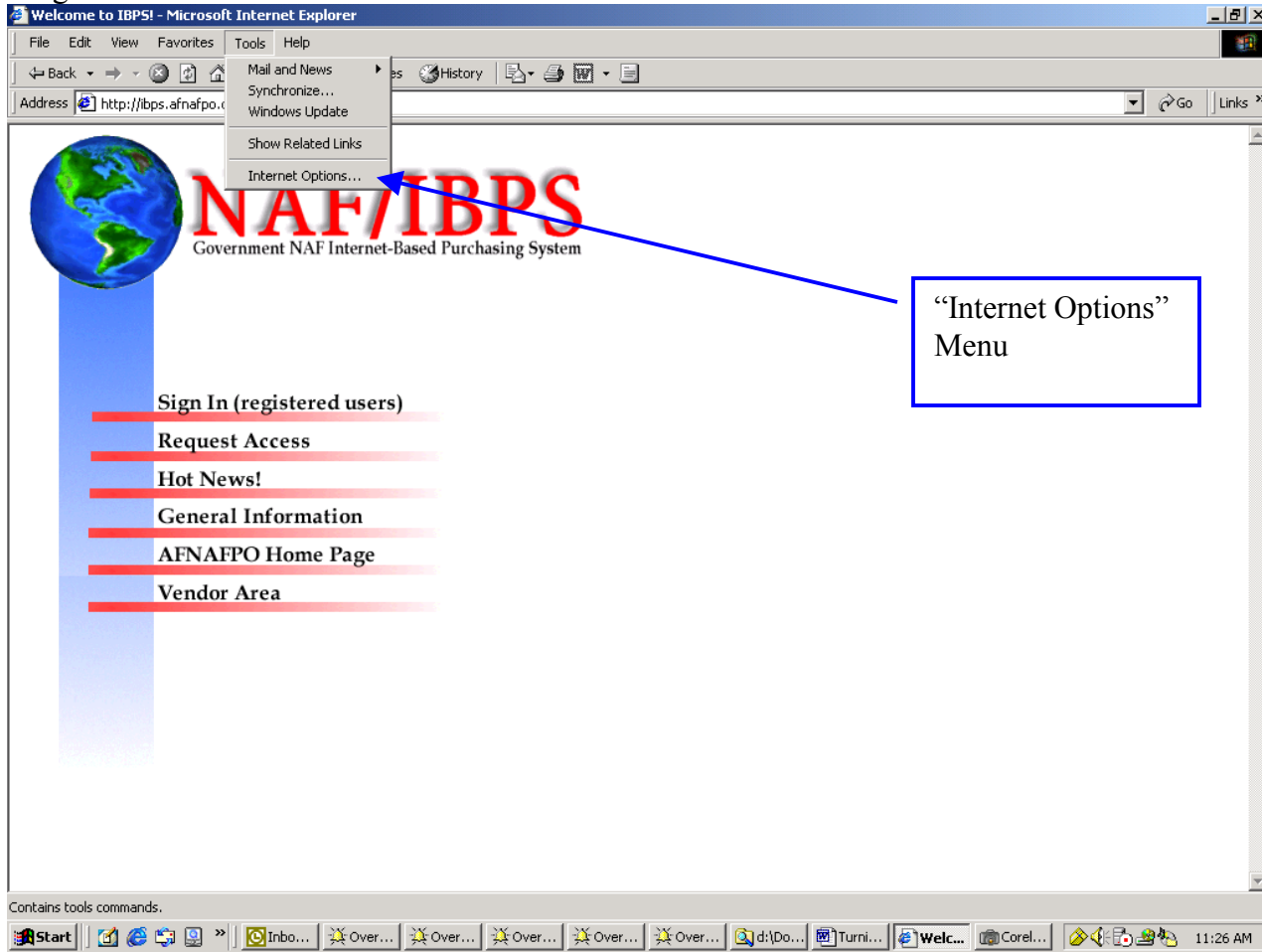


Diagram 2

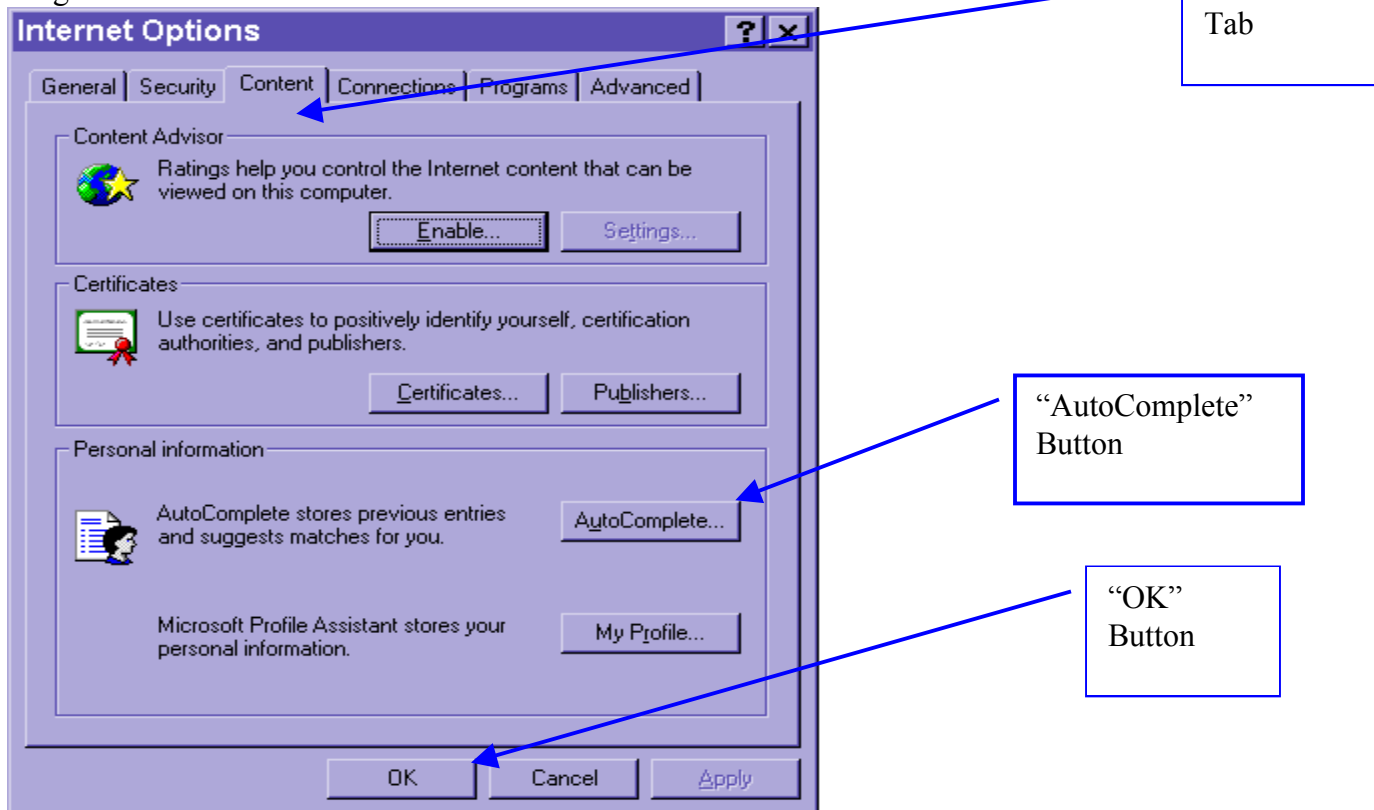
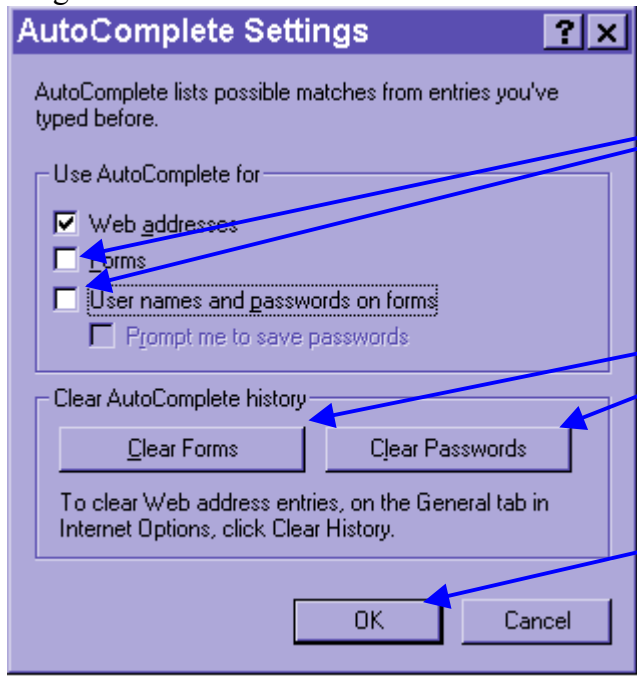


Diagram 3

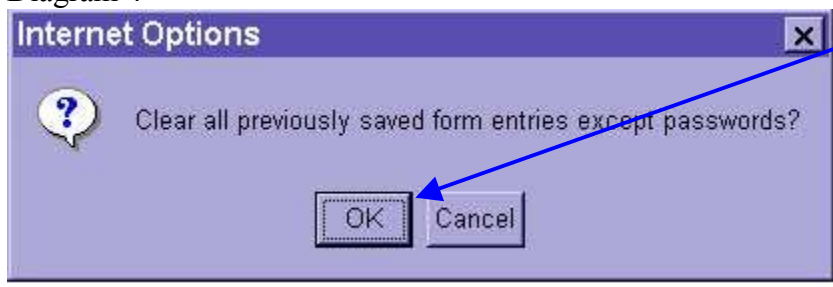


“Forms” and  
“User Names and Password on Forms”  
Checkboxes

“Clear Forms” and  
“Clear Password”  
Buttons

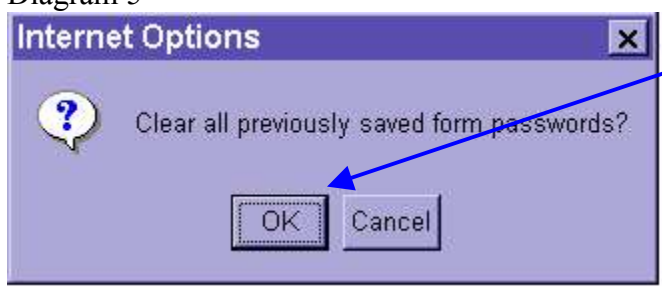
“OK”  
Button

Diagram 4



“OK”  
Button

Diagram 5



“OK”  
Button